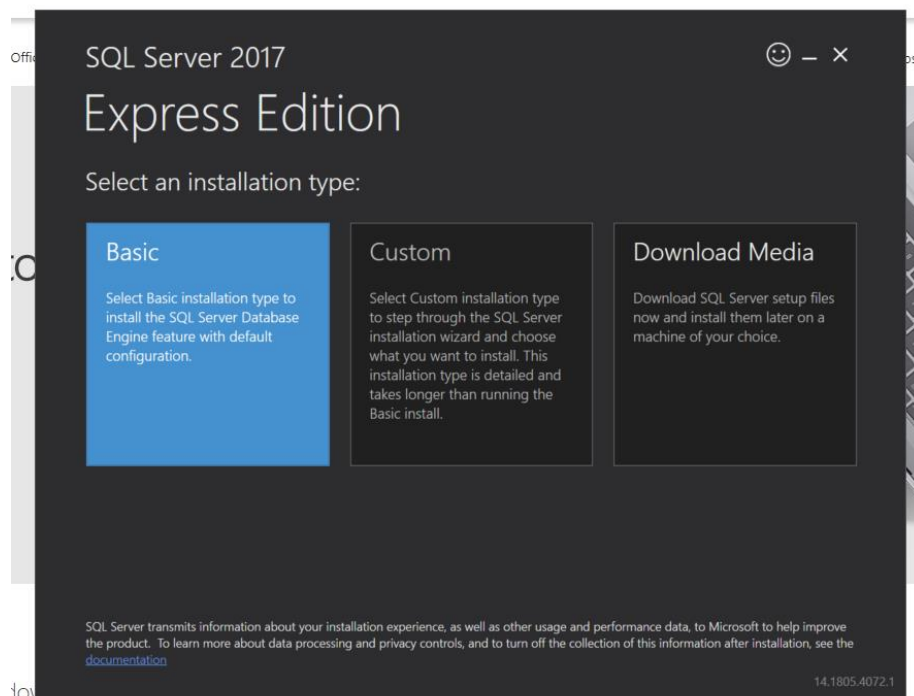


Upute za instaliranje SQL Server Expressa i SQL Server Management Studija te spajanje na SQL Server

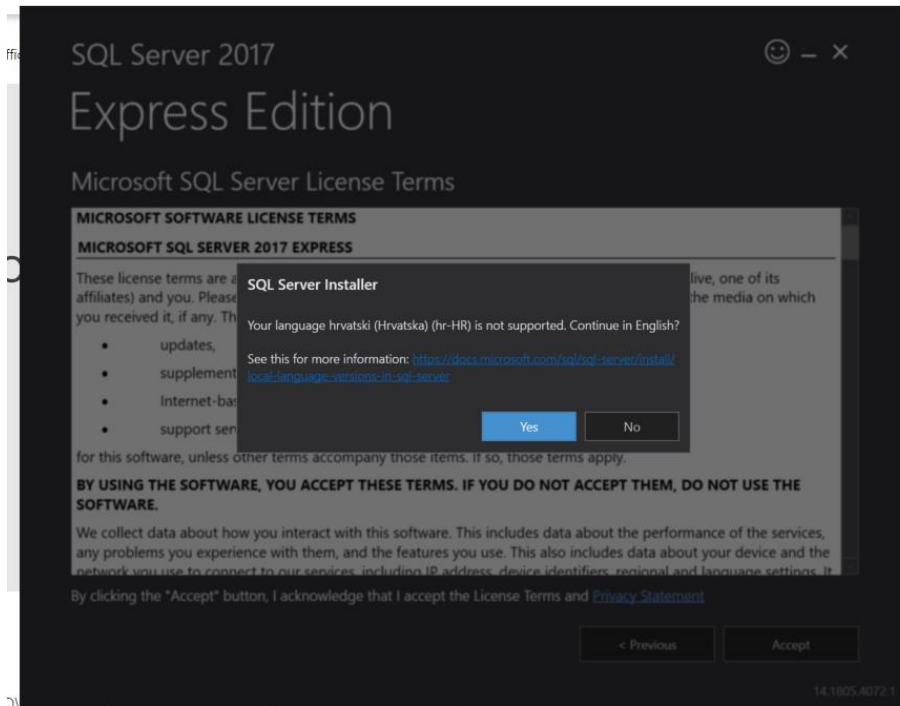
1. Preuzmite instalaciju **SQL Server Expressa** sa stranice:

<https://www.microsoft.com/en-us/download/details.aspx?id=55994>

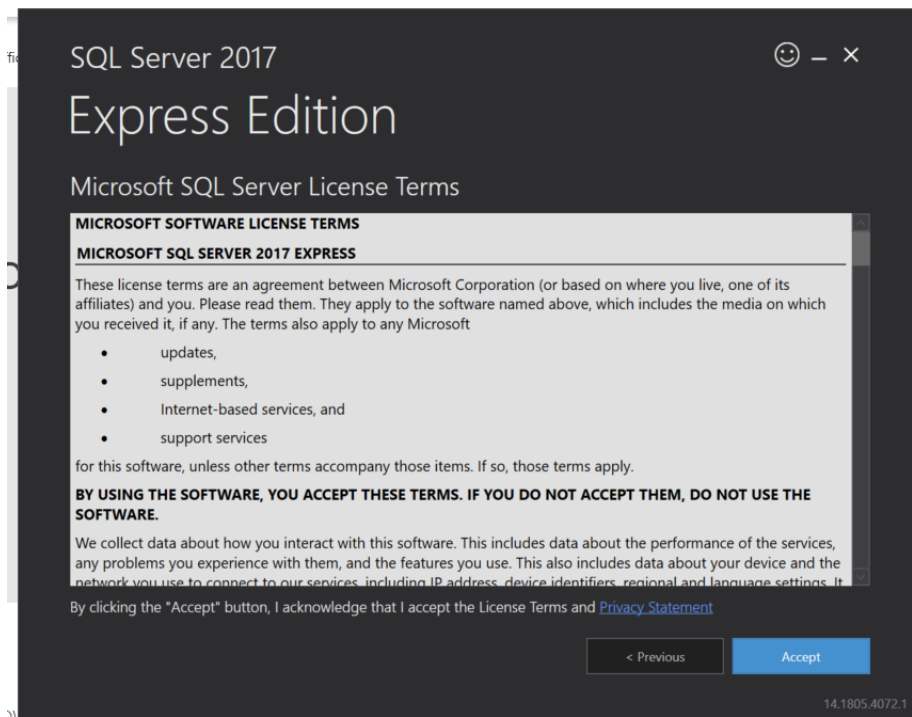
2. Pokrenite instalaciju i na prvom ekranu odaberite **Basic** instalaciju:



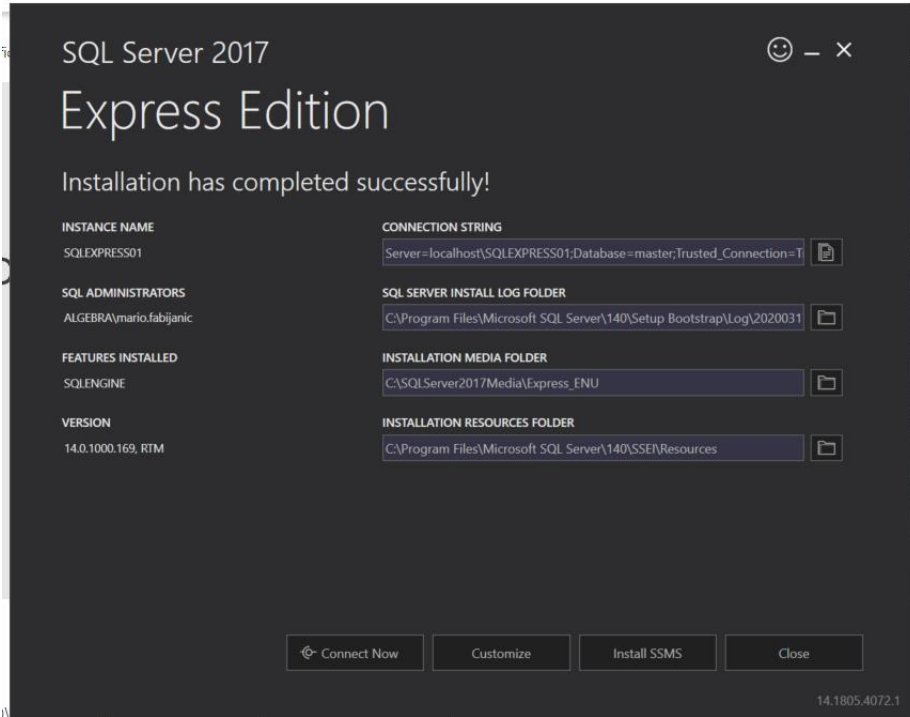
3. Kliknite Yes



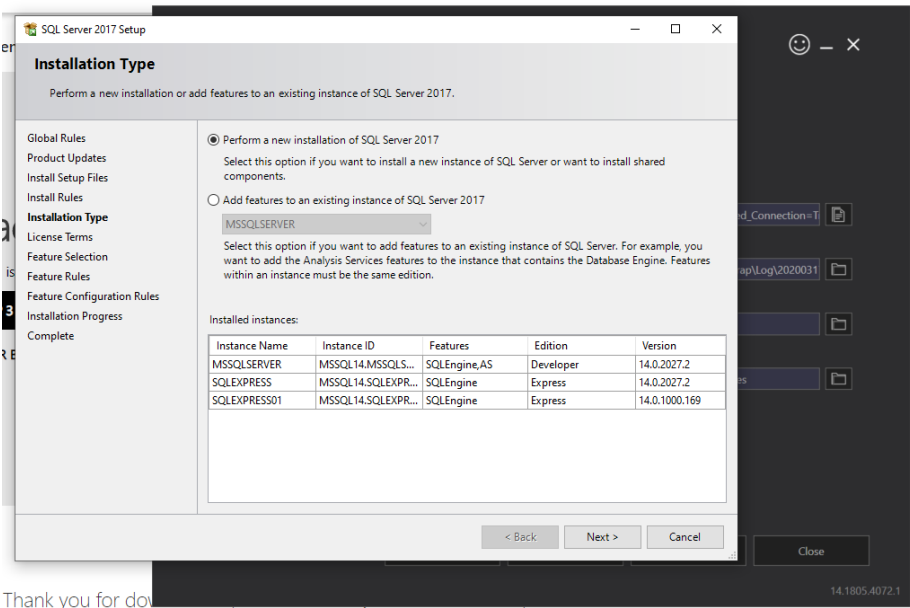
4. Kliknite Accept



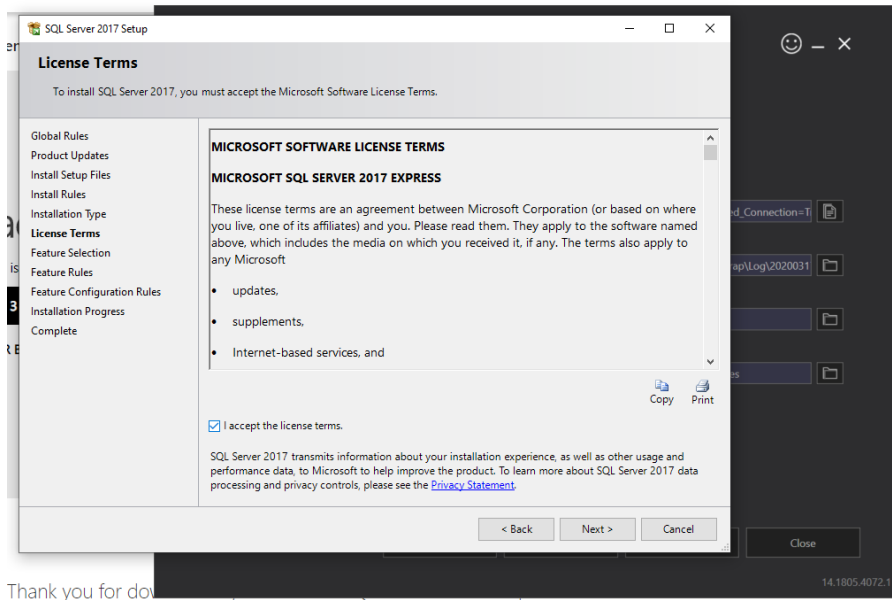
5. Ne zatvarajte ovaj prozor nego kliknite **Customize**



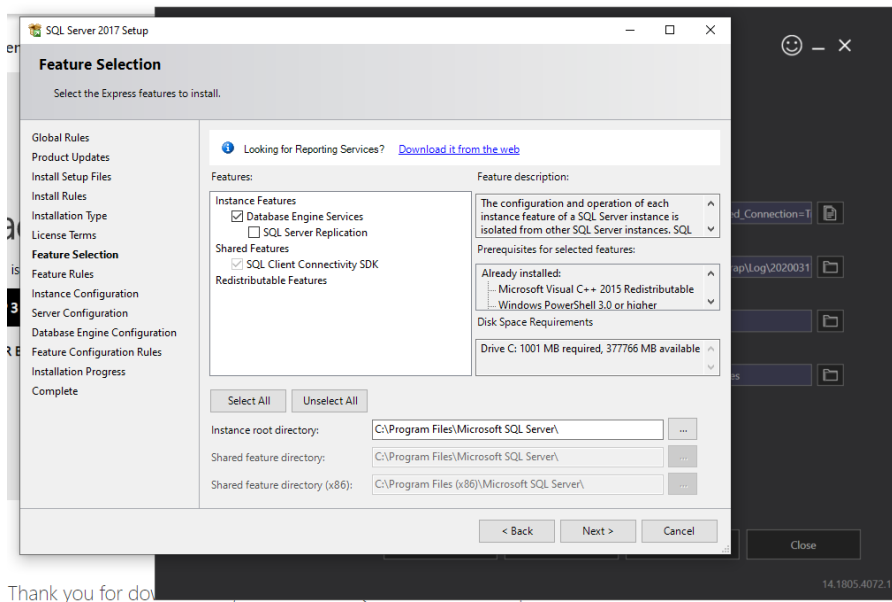
6. Odaberite prvu opciju: **Perform a new installation of SQL Server 2017** i kliknite **Next**



7. Odaberite I accept the license terms i kliknite Next

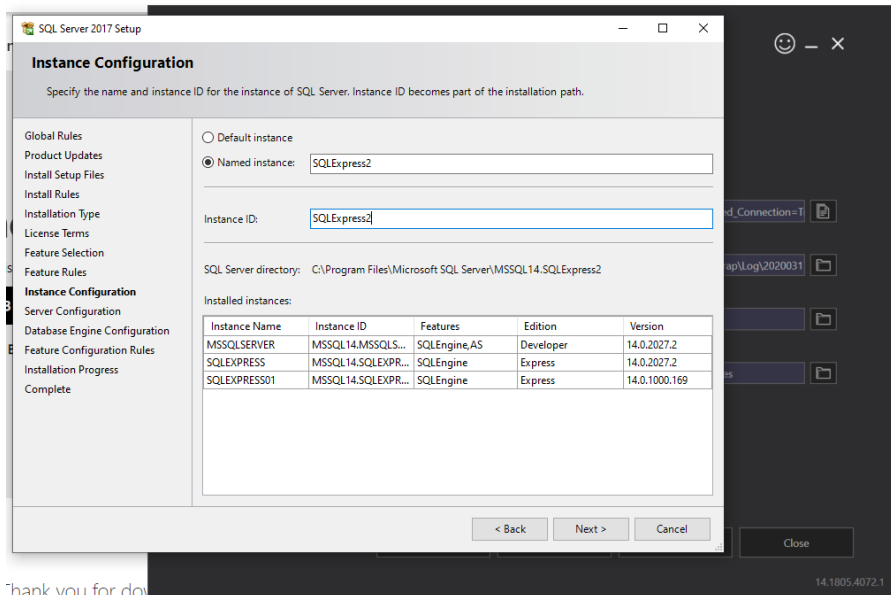


8. Provjerite je li uključena opcija Database Engine Services, ako nije uključite je i kliknite Next



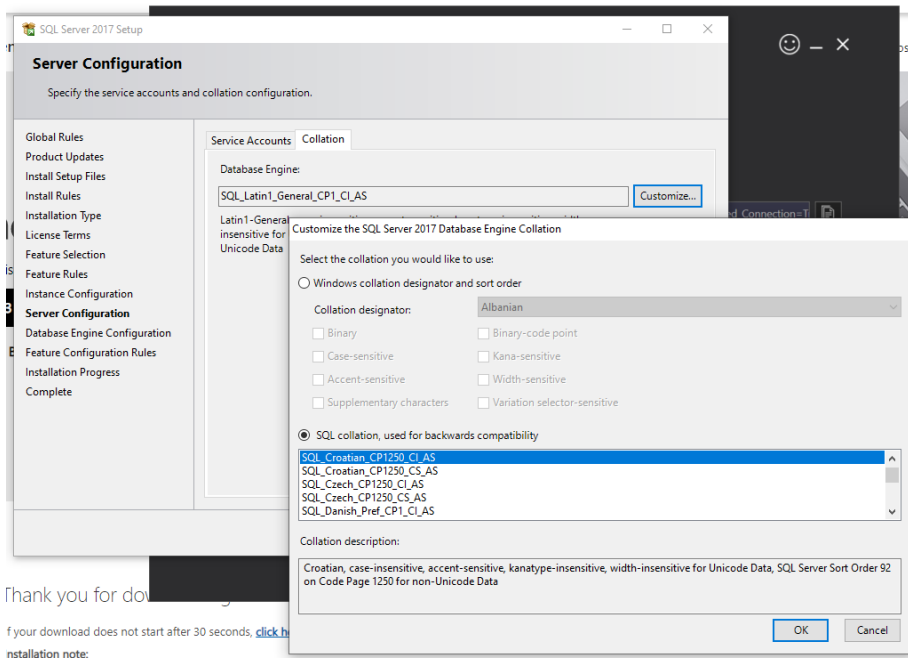
9. Odaberite prvu opciju: **Default instance** i kliknite **Next**.

Ukoliko već imate instaliran SQL Server, u tom slučaju odaberite opciju **Named instance** i upišite naziv nove instance SQL Servera i kliknite Next

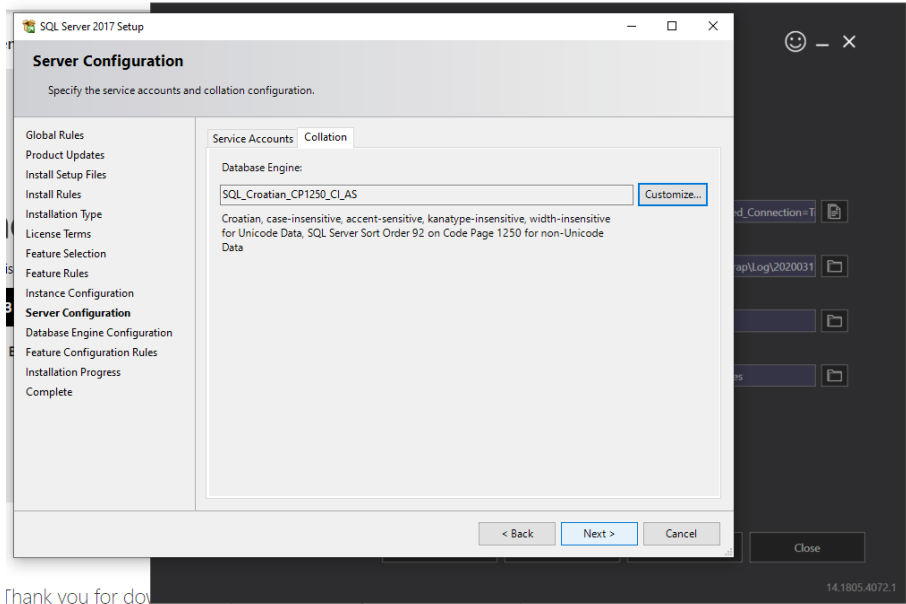


10. Odaberite karticu **Collation** i provjerite je li odabrana postavka **SQL_Croatian_CI_AS** ili slično.

Ako je kliknete **OK**, a ako nije, kliknite **Customize** i odaberite je s liste



11. Kliknite Next

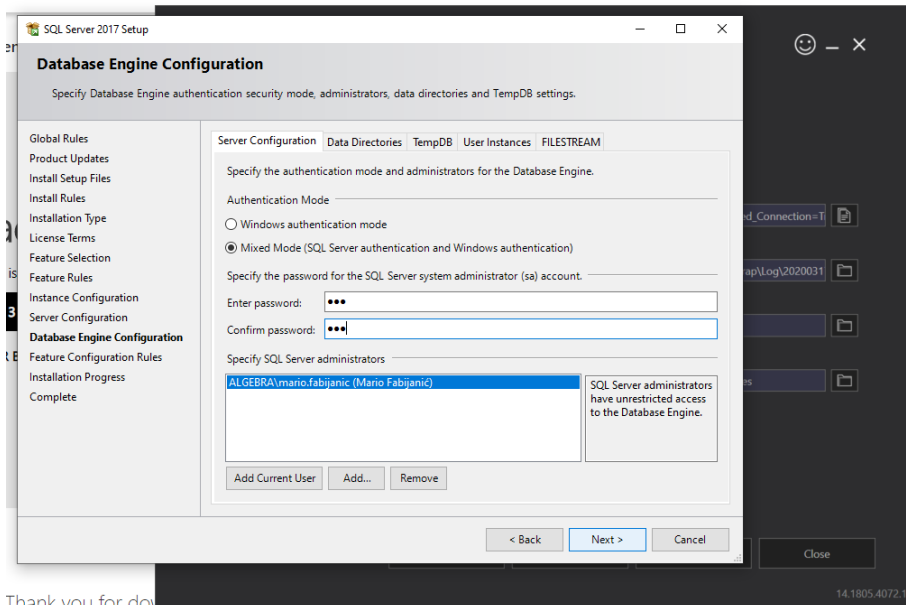


12. Odaberite Mixed Mode (SQL Server authentication and Windows authentication).

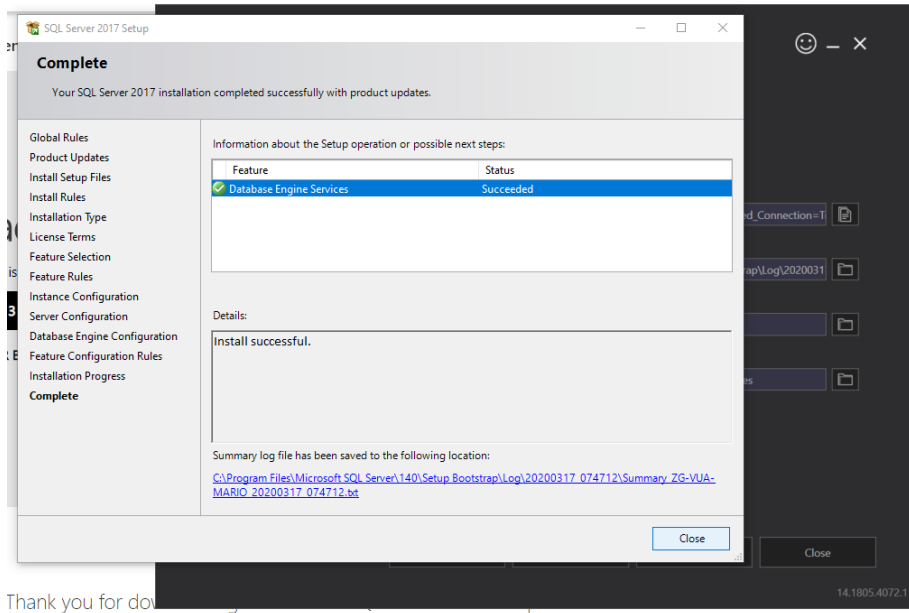
Upišite lozinku **SQL** ili neku drugu po izboru (nemojte zaboraviti koju ste lozinku zadali jer se nećete moći spojiti na instalirani SQL Server!)

Kliknite gumb **Add Current User** kako biste se dodali kao administratora SQL Servera

Kliknite **Next**



13. Kliknite **Close** – SQL Server Express je instaliran



14. Preuzmite instalaciju **SQL Server Management Studija** sa stranice:

<https://docs.microsoft.com/en-us/sql/ssms/download-sql-server-management-studio-ssms?view=sql-server-ver15>

15. Pokrenite instalaciju.

Postupak instaliranja je jednostavan, a po završetku najčešće treba napraviti restart računala.

16. Nakon instaliranja, u **Start** izborniku potražite “**SSMS**” i pokrenite **SQL Server Management Studio**

17. Odaberite ili upišite sljedeće podatke kako biste se spojili na SQL Server

Server type: Database Engine

Server name: .

(ovdje možete upisati IP adresu računala na kojem je instaliran SQL Server ili naziv tog računala ili jednostavno staviti točku koja predstavlja LOCALHOST)

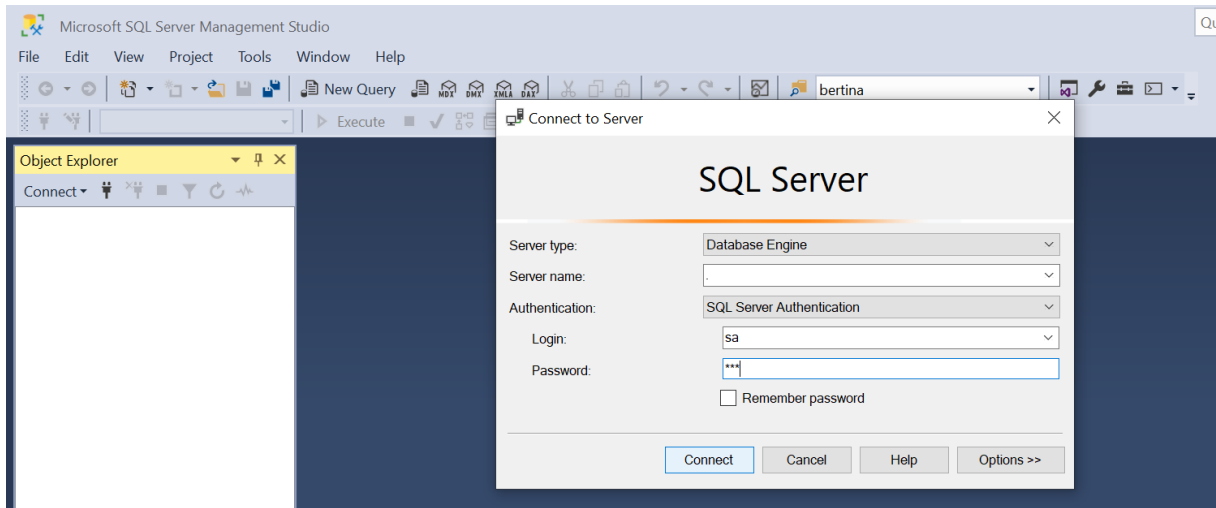
Authentication: SQL Server Authentication

Login: sa

Password: SQL

(ukoliko ste definirali drugačiju lozinku tijekom instaliranja SQL Servera, ovdje upišite definiranu lozinku)

Kliknite **Connect**



18. Ukoliko je spajanje uspješno, prikazat će se **Object Explorer** u kojem će biti vidljiv SQL Server (sa zelenim kružićem kao znakom da je server aktivan)

